



Castle Newnham

Monthly Matters



April & May 2025

GCSE Exams begin



BEST
BEDFORDSHIRE
SCHOOLS TRUST



Message from the Headteachers

Dear Families,

Welcome to our April and May edition of Castle Newnham Monthly Matters! It hardly seems a moment since the last one, and already we're well into the summer term – a time filled with activity, both inside and outside the classroom.

Year 6 pupils have made us all incredibly proud with how they have handled their SATs. The children completely took them in their stride, showing off everything they've learned in English and Maths over the past four years. While these are one measure of how the children perform in school, they do not showcase the fabulous sportspeople, performing artists, historians, scientists, geographers, citizens (the list goes on!) that these young people are.

Similarly, our Year 11 pupils have been demonstrating remarkable resilience and focus as they navigate their GCSE exams. We know how much hard work has gone into preparing for these, and their commitment has been truly outstanding.

We want to extend a huge thank you to our incredible staff for their tireless dedication and passion. A massive thank you also to our families whose continued support and partnership is invaluable to your child's success and to the life of our school community.

Have a wonderful half term break.

Kat Edwards Sara Levesley
Headteacher - Primary Headteacher - Secondary

THANK YOU!

We're saying a goodbye to **Jai Chana**, Pastoral Support Manager for Year 10 and 11, who is moving on from us at half term to work in another school. **Abi Edwins**, Head of Year 11 and Head of Food Technology, begins her maternity leave after half term and we wish her all the very best.





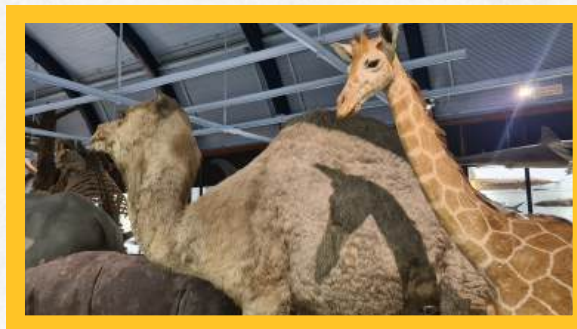
Monthly Matters

April & May 2025



Year 6 Visit Tring

Natural History Museum



Mary Poppins Jr

Tickets on sale now!



Our annual Dance Showcase took place this month held at the magnificent University of Bedfordshire Theatre! All through excellence was on display as pupils from Year 5 to Year 11 participated.

Their incredible talent, dedication, and countless hours of practice truly shone through in every routine. It was a joy to witness such a diverse and dynamic display of dance, and we are immensely proud of the professionalism and passion our pupils demonstrated on such an impressive stage.



A Culture of Care - Castle Newnham's Community-Focused Anaphylaxis Initiative



Castle Newnham has taken the proactive step to ensure the safety and wellbeing of its pupils and staff members who live with allergies by implementing readily accessible **Kitt Medical Anaphylaxis Kits** across its dining areas.

Anaphylaxis is a severe and potentially life-threatening allergic reaction that can occur rapidly and unexpectedly. Having immediate access to the necessary treatment, primarily an epinephrine auto-injector (such as an EpiPen), is crucial in managing such emergencies

Each Kitt Medical Anaphylaxis Kit contains multiple epinephrine auto-injectors in varying doses suitable for both children and adults but also clear, step-by-step instructions on how to recognise and treat anaphylaxis. Furthermore, the kits include essential supporting items such as a casualty record card to document the incident and guidance on post-treatment care and calling emergency services.

For further information on Kitt Medical Anaphylaxis Kits, resources or would like to sign up your school or organisation, please visit <https://kittmedical.com/>



Alumni news!

We are thrilled to hear that Lucas (Class of 2024) had signed a professional contract with Luton Town! Fantastic news for a great goalkeeper with a bright future ahead of him. Everyone at Castle Newnham is proud of you and we look forward to watching his journey.



Our wonderful outdoor environmental area on the North Site



Tuesday 24th June 2025

The Junior Leadership Team are looking for volunteers in our community who would be willing to be part of our Culture Day on Tuesday 24th June.

The Junior Leadership Team are particularly interested in leading sporting, creative or artistic activities at lunchtime. These activities could take place on either North Site (between the times of 12.15-2.15) or South Site (between the times of 12.00-1.30).

Please email the school office if you are interested in supporting. Once we have a complete list of activities we will let the volunteers know which site they are needed on.

Please note: all activities must be free for pupils

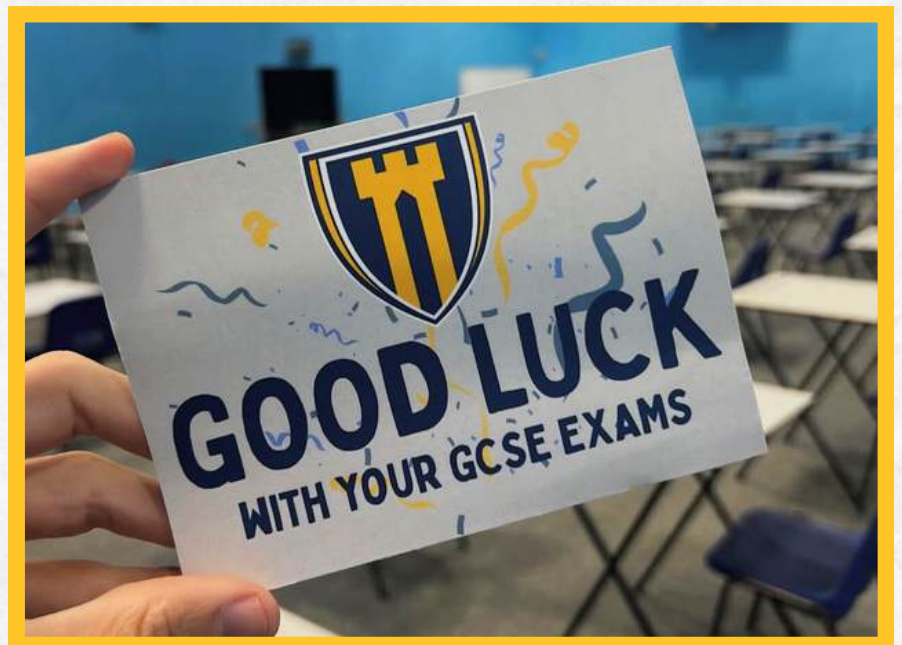


Monthly Matters

April & May 2025



It's been an incredibly busy time as we've navigated the start of the examination period. Our Year 11s are currently deep into their GCSE exams, which run from early May through to mid-June. Our Year 6 pupils have recently completed their SATs, which took place last week. With the sports hall in exam mode, we're also conducting Year 10 summer exams, which provide vital experience and preparation for their final GCSE year.





Community superstars!

“On the 27th April I laced up my running shoes and run the London Marathon in order to support Queen’s Park Community Organisation (QPCO). Thanks to the great support I received, I managed to raise £1,300 for this local charity, which is dedicated to empowering individuals by bridging gaps between communities, schools, and organisations, celebrating and integrating different cultures, and providing support services for domestic abuse survivors. A group of CNS pupils travelled to London to support me during the race. They made a lovely banner which allowed me to spot them in the crowd. They gave me the final push to get over the finish line and finish it in 4 hours and 32 minutes”

Mr Paganini, Teacher of Secondary Maths & Science



“ It took me 6hrs 11 to run the London Marathon. I ran for the charity Breast Cancer Now - I have raised over £3500 so far.”

Madame Williams, Teacher of French

Congratulations to Miss Jess Cain (Primary Cover Supervisor) who took part in the London Landmarks Half Marathon on the 6th April raising around £850 for Sue Ryder.



An unforgettable evening at the 'Songs from the Stage' showcase, presented by 4SIXTEEN Theatre Company! We extend our warmest congratulations to all our secondary pupils who took to the stage. Their talent shone brightly as they delivered a spectacular array of songs from some of the greatest theatre shows. Well done to everyone involved in making it such a resounding success!



Caythorpe 2025



Year 4 residential to Caythorpe Court



Does your child enjoy music in school?
Then come along to...



Bedford Music
Cooperative

Saturday Morning Music Centre

OPEN MORNING

7th June 9-12pm

at Castle Newnham Secondary School

(Please sign up before you come)

9am - Learn 2 Play

(If you've only just started playing)

Woodwind/Brass/Recorder/Strings/Drums/Keyboards/Guitar

From 9:30am - All other activities

(If you've been playing a year already)

Ukulele Band/Composing/iPads/Choir/Guitar/Drums
Brass/Woodwind/Strings/Djembe/Rock Band + more...

Scan QR code
for timetable
and sign up



BedMusic.Coop To sign up
BedfordMusic.org.uk



BEST
SUMMER ARTS FESTIVAL

LIVE MUSIC • DANCE PERFORMANCES
DRAMA • ART EXHIBITION • BBQ • DRINKS

6PM AT SAMUEL WHITBREAD ACADEMY
ADULTS £6 • CONCESSIONS £4

26TH JUNE 2025

 Tickets available from or scan
www.ticketsource.co.uk/swaconcert and QR code.